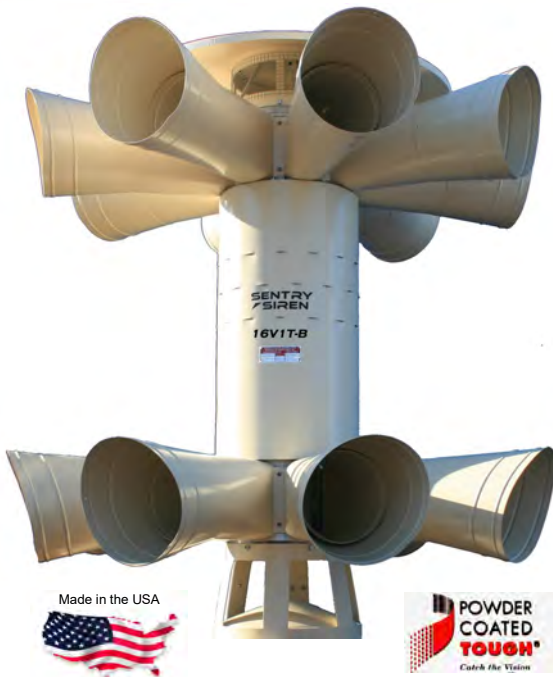


16V1T-B

Premium Warning Siren

Unmatched Power, Reliability, and Performance



- **100% Maintenance Free**, not just the siren, the whole system!
- **Non-Rotating**: Forget the worries of rotating sirens, this unit has only two moving parts and does not require lubrication or any type of scheduled adjustment or maintenance.
- **Output Frequency Modulation**: Thanks to the dual motors and dual fans that power the 16V1T-B, the peak output frequency oscillates ever so slightly creating a natural “wow wow wow” effect. The result is increased and more thorough perceived coverage.
- **5 year Warranty**: Rest assured your siren will be functional at all times and enjoy the confidence of free lifetime tech support and the best customer service in the industry.

The workhorse of our siren family is the 16V1T-B. With its low pitch sound and battery reliability, this true performer is meant for cities who want the peace of mind a battery siren provides. Priced to compete, this siren is 100% FEMA and USDA grant compliant. This 16 Horsepower performer is rated at 129 dB(c) @ 100 ft. continuous*. This rating is not just for 25% of its cycle time, like its rotating competitors, the 129 dB measurement is for 100% of its full RPM run time. Plus, this 129 dB is available in a dual 460 Hz tone, the lowest pitch in the industry. Therefore, its sound will fade at a lower rate than its competitors, giving the user more distance per decibel. This pitch has been shown to stand up

to wind fade and tree cover better than its high pitch competitors.

Perhaps the key feature of the 16V1T-B is the length of time that the siren will run on batteries. As is common in the United States, storms frequently come in lines over a 3 or 4 hour period. If the first storm knocks out power, you may need a siren which can be sounded 6 or 7 times before power is restored. The Sentry model 16V1T-B can sound 10 full 3 minute signals using its battery reserve; that's more than twice the reserve capacity of competitive sirens.

The 16V1T-B is a state of the art siren created with tried and true technology. Add a Gen-3 radio controller for the ultimate outdoor warning system.

ELECTRO-MECHANICAL SIRENS

produce stronger and further reaching sound than electronic sirens while providing far better reliability.

OMNI-DIRECTIONAL DEVICES

“..present a distinct advantage.. over rotational devices,” according to FEMA's warning system guide. It says “a rotational device will have an overall lower dB level when assessed across a given time period than an Omni-directional device operating at the same frequency.” (4.4.5 FEMA OWS Technical Bulletin 2.0)

Further, the guide states: “Omni-directional sirens provide a greater area of coverage than do rotating or directional devices. They provide a more constant signal that improves public alerting...” (4.4.5 FEMA OWS Technical Bulletin 2.0)

16V1T-B

Premium Warning Siren

Performance

16V1T-B siren is rated @ 129 dB(c) at 100 ft.*

Estimated coverage: 5,600 ft. (Radius) continuous**
(3.5 sq. miles)

Siren's sound pattern is Omni-Directional. Siren produces 100% volume at peak RPM 100% of the siren cycle time.

16V1T-B produces a Frequency Modulated, Dual 460 Hz pitch

Power Requirements

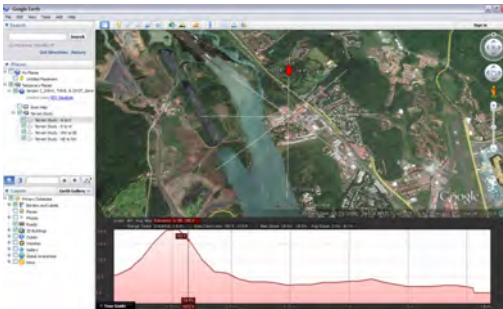
AC/DC Kit (Included)—Siren operates on AC rectified power when available then automatically switches to battery backup power when AC power fails.

Siren uses two (2) American Made, 8 HP, DC motors

125 Amp, 208-240 VAC, 1 phase power required.

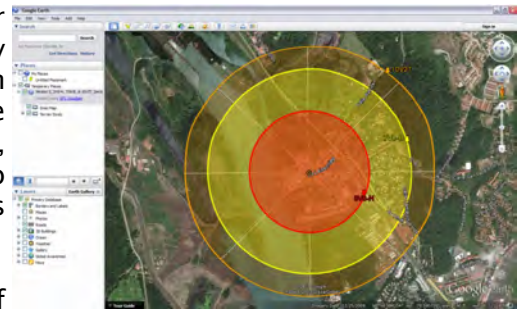
Separate, 30 Amp, 110 VAC circuit required for controls

Additional Services / Accessories



Need a site design? One of our engineers will work with you step by step to determine the optimum location for your siren(s). We analyze topography and terrain, population, available infrastructure, and more to design a siren system that best suits your community's needs.

Best of all, this is done 100% free of charge, no obligation!



Siren Starters and Controllers:

Our "S" series siren motor starters and "Generation" series siren controllers make powering and activating your siren simple and easy. Call us today and let our knowledgeable staff help you select the perfect control solution for your system!



"S" series motor starter



GEN-1 manual controller



GEN-3 radio controller

Be sure to ask about our full line of siren activation, weather monitoring and communication packages including "Storm Sentry", the world's first fully automatic siren activation system, "S.T.A.R.", our state-of-the-art report-back status monitoring system, and "E.P.I.C.", the world's first PC-based FEMA IPAWS interface.



* - Sentry rating based on field tests using FEMA Guidelines; assumes perfect conditions, actual coverages may vary based on multiple factors. No guarantee is expressed or implied concerning dB or SPL of sirens.

** - Based on FEMA guidelines of 9 dB drop and assumes perfect conditions, actual coverages may vary based on unforeseen factors. No guarantee is expressed or implied concerning sound coverage of sirens.