

# 40V2T

Premium Warning Siren

**SENTRY  
SIREN** Inc.

**SENTRY  
SIREN** Inc.



- **100% Maintenance Free**, not just the siren, the whole system!
- **Non-Rotating**: Forget the worries of rotating sirens, this unit has only two moving parts and does not require lubrication or any type of scheduled adjustment or maintenance.
- **Compatibility**: This siren will integrate seamlessly with most existing siren systems.
- **5 year Warranty**: rest assured your siren will be functional at all times and enjoy the confidence of free lifetime tech support and the best customer service in the industry.

At the top of the food chain, the 40V2T stands as the largest Omni-Directional siren in production today. Meant for covering large areas efficiently, this siren is 100% FEMA and USDA grant compliant. This 40 Horsepower brute is rated at 130 dB(c) @ 100 ft. continuous\*. Not just for 25% of its cycle time, like its rotating competitors, the 130 dB measurement is for 100% of its full volume run time. Plus, this 130 dB is available in a 600/800 Hz arrangement, the lowest dual pitch arrangement in the industry; meaning its sound will fade at a lower rate than its competitors, giving the user more distance per decibel.

The 40V2T is available in three phase power and can even be upgraded to battery functions by selecting its brother, the 40V2T-B. All exposed siren components are of powder coated metals, providing the most durable finish available. The siren can be upgraded to Stainless Steel for use in harsh environments. Shipping weight of the siren is 1200 lbs.

Couple the 40V2T with the Generation 3 series siren controller, a motor starter and pole mounting bracket for a state of the art system created with tried and true technology for a winning combination.

#### ELECTRO-MECHANICAL SIRENS

produce stronger and further reaching sound than electronic sirens while providing far better reliability.

#### OMNI-DIRECTIONAL DEVICES

"..present a distinct advantage.. over rotational devices," according to FEMA's warning system guide. It says "a rotational device will have an overall lower dB level when assessed across a given time period than an Omni-directional device operating at the same frequency. " (4.4.5 FEMA OWS Technical Bulletin 2.0)

Further, the guide states: "Omni-directional sirens provide a greater area of coverage than do rotating or directional devices. They provide a more constant signal that improves public alerting..." (4.4.5 FEMA OWS Technical Bulletin 2.0)

# 40V2T

## Premium Warning Siren

### Performance

This siren is rated by Sentry @ 131 dB(c) at 100 ft.\*

Estimated sound radius is 6,200 ft continuous.\*\*

Sound pattern is Omni-Directional producing 100% volume at peak RPM 100% of the siren cycle time.

The 40V2T features a dual pitch design with one rotor producing 600 Hz and the other producing 850 Hz.

### Power Requirements

Three Phase Siren:

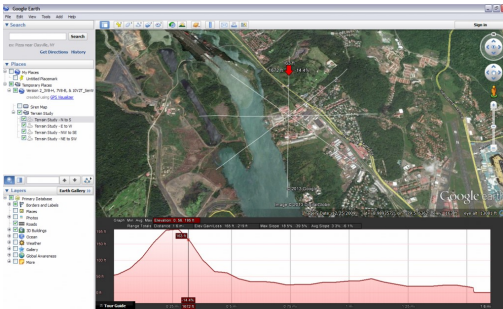
40 HP: 208/230 (460V-special order), 60 Hz

NP/NEC FLA (230V) - 91.0 / 104.0

Uses Starter # S40W

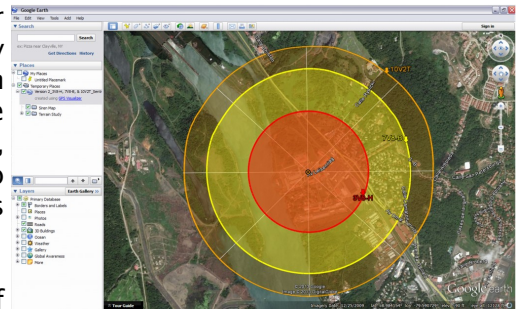
Requires 150 amp circuit breaker

## Additional Services / Accessories



Need a site design? One of our engineers will work with you step by step to determine the optimum location for your siren(s). We analyze topography and terrain, population, available infrastructure, and more to design a siren system that best suits your community's needs.

Best of all, this is done 100% free of charge, no obligation!



### Siren Starters and Controllers:

Our "S" series siren motor starters and "Generation" series siren controllers make powering and activating your siren simple and easy. Call us today and let our knowledgeable staff help you select the perfect control solution for your system!



"S" series motor starter

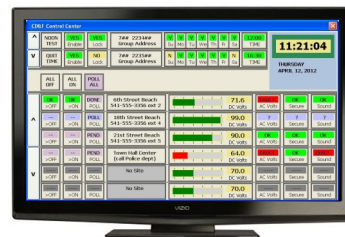


GEN-1 manual controller



GEN-3 radio controller

Be sure to ask about our full line of siren activation, weather monitoring and communication packages including "Storm Sentry", the world's first fully automatic siren activation system, "S.T.A.R.", our state-of-the-art report-back status monitoring system, and "E.P.I.C.", the world's first PC-based FEMA IPAWS interface.



\* - Sentry rating based on field tests using FEMA Guidelines; assumes perfect conditions, actual coverages may vary based on multiple factors. No guarantee is expressed or implied concerning dB or SPL of sirens.

\*\* - Based on FEMA guidelines of 9 dB drop and assumes perfect conditions, actual coverages may vary based on unforeseen factors. No guarantee is expressed or implied concerning sound coverage of sirens.